

Town Farm



lovelcooper
HOMES

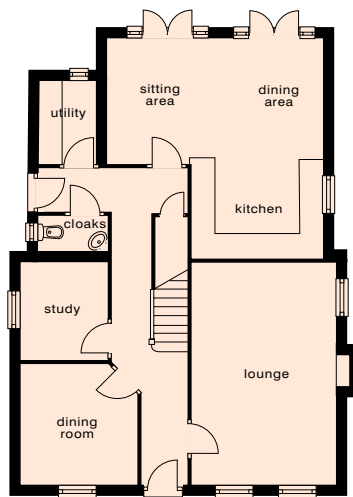
A superb trio of spacious and elegant four bedroom detached houses
in a charming Wolds village location.

beeford, nr driffield

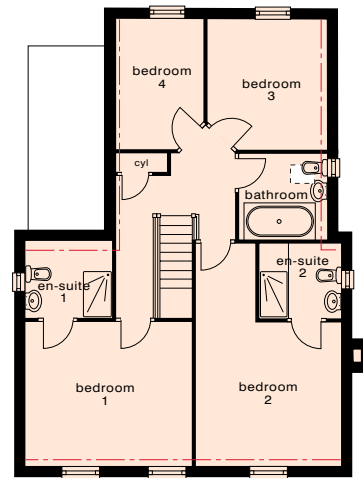


The Lissett offers all the interior features and carefully planned layout to be found in the Foston, with a subtly different front elevation.

For those with a growing family, these outstanding new homes provide the ideal blend of interior "wow" factor with gardens large enough for fun – perfect for entertaining, for relaxing, for playing - and simply for living life to the full!



ground floor



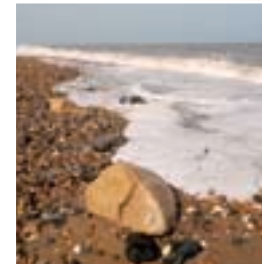
first floor

the lissett 4 bedroom detached house
with detached garage

| | | |
|------------------------|---------------|-----------------|
| lounge | 3.80 x 5.60 | 12'5" x 18'4" |
| dining room | 2.90 x 3.00 | 9'6" x 9'10" |
| study | 2.10 x 2.50 | 6'10" x 8'2" |
| utility | 1.50 x 2.00 | 4'11" x 6'6" |
| dining/sitting/kitchen | 5.35* x 5.50* | 17'6"* x 18'0"* |
| cloaks | | |

| | | |
|------------|-------------|---------------|
| bedroom 1 | 4.10 x 3.60 | 13'5" x 11'9" |
| en-suite 1 | 2.10 x 1.90 | 6'10" x 6'2" |
| bedroom 2 | 3.80 x 3.60 | 12'5" x 11'9" |
| en-suite 2 | 2.20 x 1.90 | 7'2" x 6'2" |
| bedroom 3 | 3.00 x 3.25 | 9'10" x 10'7" |
| bedroom 4 | 2.25 x 3.25 | 7'4" x 10'7" |
| bathroom | 2.30 x 2.10 | 7'6" x 6'10" |

*denotes maximum dimensions taken at the widest point.

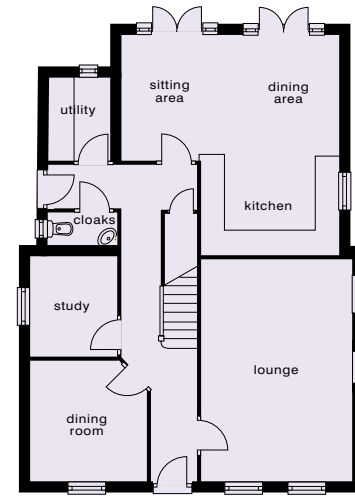




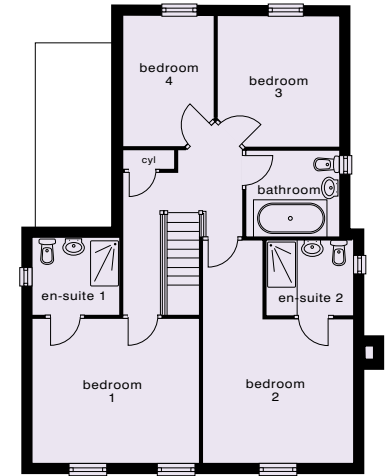
the foston 4 bedroom detached house with detached garage

| | | |
|------------------------|---------------|--|
| lounge | | |
| 3.80 x 5.60 | 12'5" x 18'4" | |
| dining room | | |
| 2.90 x 3.00 | 9'6" x 9'10" | |
| study | | |
| 2.10 x 2.50 | 6'10" x 8'2" | |
| utility | | |
| 1.50 x 2.00 | 4'11" x 6'6" | |
| dining/sitting/kitchen | | |
| 5.35* x 5.50* | 17'6" x 18'0" | |
| cloaks | | |
| bedroom 1 | | |
| 4.10 x 3.60 | 13'5" x 11'9" | |
| en-suite 1 | | |
| 2.10 x 1.90 | 6'10" x 6'2" | |
| bedroom 2 | | |
| 3.80 x 3.60 | 12'5" x 11'9" | |
| en-suite 2 | | |
| 2.20 x 1.90 | 7'2" x 6'2" | |
| bedroom 3 | | |
| 3.00 x 3.25 | 9'10" x 10'7" | |
| bedroom 4 | | |
| 2.25 x 3.25 | 7'4" x 10'7" | |
| bathroom | | |
| 2.30 x 2.10 | 7'6" x 6'10" | |

*denotes maximum dimensions taken at the widest point.



ground floor



first floor

outstanding levels of luxury in a superb location



This characterful new home will provide all the space you've been searching for.

With a luxurious house bathroom, two en-suites, utility, study, separate dining room and beautifully fitted dining kitchen it's a dream home you'll love making a reality – every moment you spend there.



-  **the foston**
4 bedroom detached house
-  **the lissett**
4 bedroom detached house



Lovel Cooper is building a solid reputation for the quality and care it lavishes on the construction of its sought-after new homes. Nowhere is this better illustrated than at Town Farm in Beeford.

Just three fortunate families will be able to enjoy the outstanding levels of luxury available at Town Farm:

Each property features 4 bedrooms, 2 en-suites, luxury house bathroom, spacious dining kitchen, utility room, study, lounge and separate dining room, plus good sized gardens and detached garages.

These superb new homes have been carefully designed and specified to blend with the village's existing architectural styles and finishes.

Beeford village contains the historic church of St Leonard, a C of E Primary School, Community Centre, doctors' surgery, two public houses and a selection of shops. It is located at the cross roads of the B1249 Driffield to Skipsea and A165 Scarborough to Hull roads, making it ideally placed for access to country, coast and commerce.



Quick & Clarke,
Grindell House,
35 North Bar Within,
Beverley HU17 8DB

Contact
01482 886200
for further information



lovelcooper
HOMES

Yorkshire Office

1 Portland Place
Spring Gardens, Doncaster DN1 3DF
Tel: 01302 363535 Fax: 01302 349528

London Office

64 Knightsbridge, London SW1X 7JF
Tel: 020 7828 5596 Fax: 020 7976 6625

Email: info@lovelcooper.co.uk
Website: www.lovelcooper.co.uk

